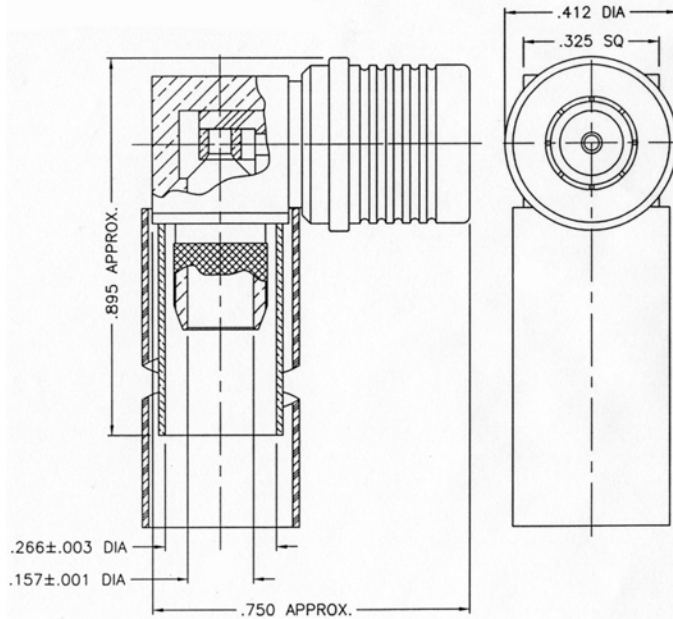


THE REVISION STATUS OF ALL SHEETS OF THIS DRAWING IS THE SAME AS SHEET 1

LTR	DESCRIPTION	DATE	BY
-	Released	8/20/03	MS
B	Deleted Gasket	10/24/06	JCL



I. MATERIALS & FINISHES

- center contact: Gold Plated Phosphor Bronze (non-solder)
- outer contact: Nickel Plated Brass
- coupling nut: Nickel Plated Brass
- body: Nickel Plated Brass
- crimp sleeve: Nickel Plated Copper
- dielectric: Teflon® PTFE
- shrink sleeve: Adhesive Lined Polyolefin
- attachment: braid crimp

II. ELECTRICAL PROPERTIES

- impedance: 50 ohms
- working voltage: 375 vrms (max)
- vswr: 1.25:1 (max) up to 18 GHz
- insertion loss: 0.10 x √Fghz

Unless otherwise specified, dimensions are in inches. Tolerances are applicable when specified.

These drawings and specifications contain proprietary information which is the property of Times Microwave Systems.

Approvals		
Drawn	MS	8/20/03

TIMES MICROWAVE SYSTEMS
 Wallingford, CT 06492
 (203) 949-8400; (203) 949-8423.Fax
 www.timesmicrowave.com

EZ-240-QM-RA
 Type-QMA male (plug) Right Angle
 for LMR-240 Cable

Size A	CAGE CODE 68999	Drawing No.: 3190-1539
Scale: NA	Rev. (B)	Sheet: 1 of 1