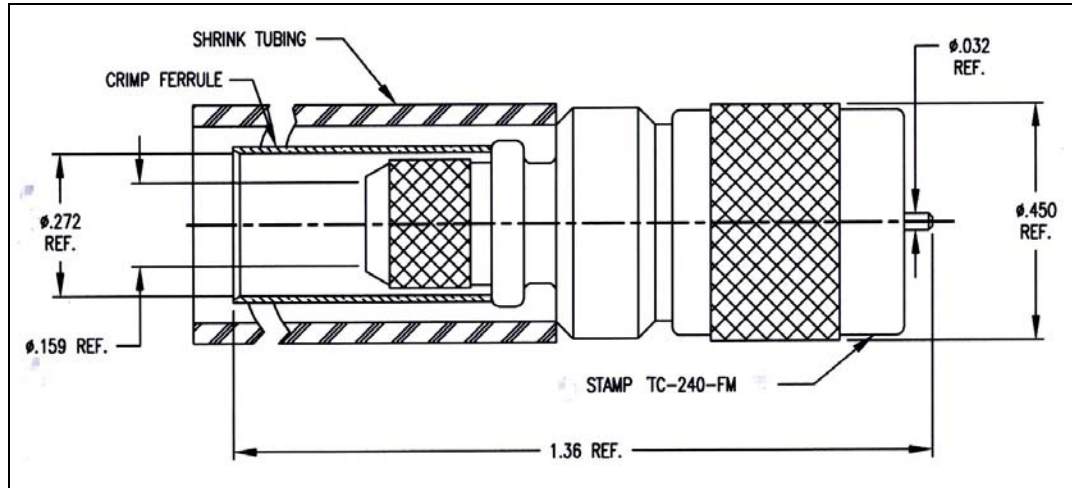


LTR	DESCRIPTION	DATE	BY
-	Released	10/25/99	JCL
A	Updated Sketch; Part Number was TC-240-FM-75	6/17/03	JCL



I. MATERIALS & FINISHES

- center contact: Gold Plated Brass
- outer contact: Nickel Plated Brass
- coupling nut: Nickel Plated Brass
- body: Nickel Plated Brass
- crimp sleeve: Nickel Plated Copper
- dielectric: Teflon® PTFE
- gasket: Silicone Rubber
- shrink sleeve: Adhesive Lined Polyolefin
- attachment: braid crimp (.255"hex)

II. ELECTRICAL PROPERTIES

- impedance: 75 ohms
- working voltage: 500 vrms (max)
- vswr: 1.35:1 (max) up to 2.0 GHz
- insertion loss: $0.15 \times \sqrt{F}$ ghz

Unless otherwise specified, dimensions are in inches. Tolerances are applicable when specified.

These drawings and specifications contain proprietary information which is the property of Times Microwave Systems.

Approvals		
Drawn	JCL	10/25/99

TIMES MICROWAVE SYSTEMS
 Wallingford, CT 06492
 (203) 949-8400; (203) 949-8423.Fax
 www.timesmicrowave.com

TC-240-FM
 Type-F male Straight Plug
 for LMR-240 50 ohm Cable

Size A	CAGE CODE 68999	Drawing No.: 3190-924
Scale: NA	Rev. (A)	Sheet: 1 of 1