

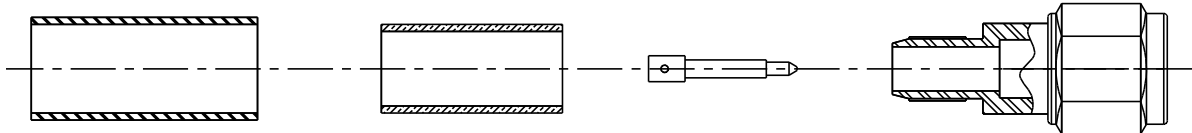
# TIMES MICROWAVE SYSTEMS

358 Hall Avenue/P.O. Box 5039  
 Wallingford, CT 06492-5039  
 Tel: 203-949-8400  
 FAX: 203-949-8423  
 1-800-TMS-COAX  
 www.timesmicrowave.com

## INSTALLATION INSTRUCTIONS

TC-200-SM (3190-467;-571;-612)

(Cable Types: LMR-200; 200-FR; 200-DB; 200-MA)

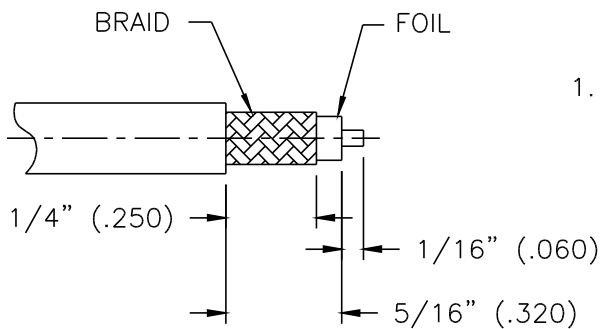


WEATHER SEAL

CRIMP SLEEVE

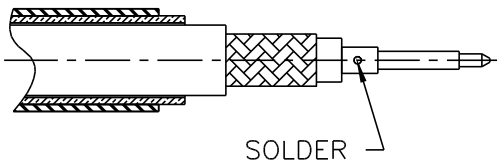
CONTACT

BODY ASSEMBLY



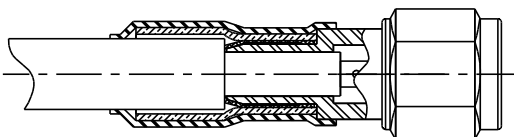
1. A. Trim cable per dimensions shown.

B. Remove any residual plastic from the center conductor and deburr center conductor using a fine file.



2. A. Solder contact to center conductor, making sure back end of contact is flush with trimmed end of cable dielectric. Use minimal heat to minimize melting of foam dielectric. Inspect to be sure aluminum foil is not touching center contact.

B. Slide crimp sleeve and weather seal over cable.



3. A. Insert cable into connector until fully seated, with all braid wires on the outside of connector body and aluminum tape inside connector body.

B. Slide crimp sleeve forward and crimp as close as possible to body using a .213" hex die. Use Times HX-4 crimp tool or equivalent. Do not crimp rear of crimp sleeve.

C. Heat shrink weather seal over rear of connector body and down onto cable jacket using hot air gun.