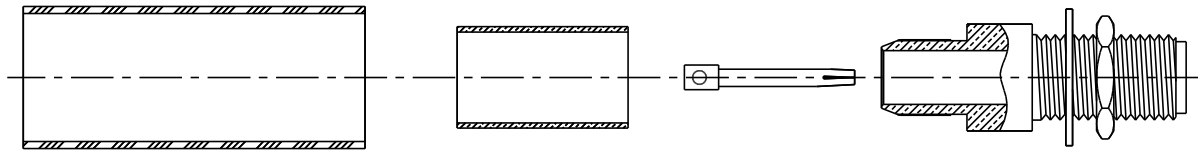


TIMES MICROWAVE SYSTEMS

358 Hall Avenue/P.O. Box 5039
Wallingford, CT 06492-5039
Tel: 203-949-8400
FAX: 203-949-8423
1-800-TMS-COAX
www.timesmicrowave.com

INSTALLATION INSTRUCTIONS TC-240-SF-BH (3190-824)

(Cable Types: LMR-240; 240-FR; 240-DB; 240-MA; 240-Ultraflex)

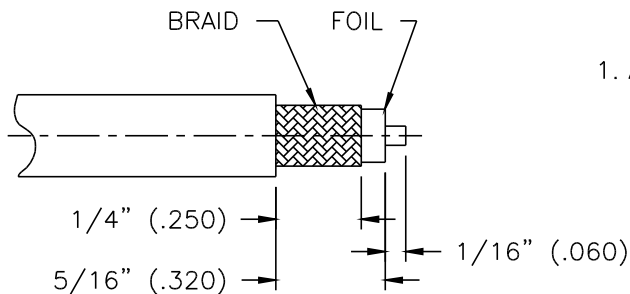


WEATHER SEAL

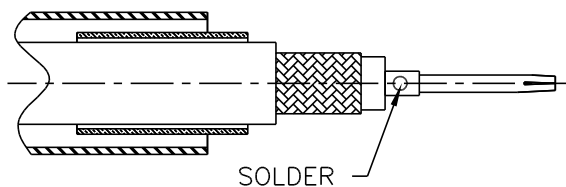
CRIMP SLEEVE

CONTACT

BODY ASSEMBLY

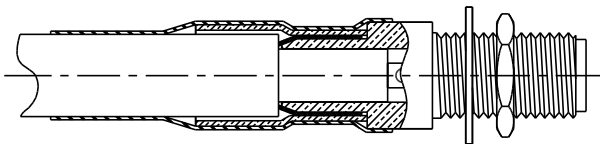


1. A. Trim cable per dimensions shown
B. Remove any residual plastic from the center conductor and deburr center conductor using a fine file.



2. A. Solder contact to center conductor using Sn-60 soft solder, making sure back end of contact is flush with trimmed end of cable dielectric. Use minimal heat to minimize melting of foam dielectric. Inspect to be sure aluminum tape is not touching center contact.

- B. Slide crimp sleeve and weather seal over cable.



3. A. Insert cable into connector until fully seated, with all braid wires on the outside of connector body and aluminum tape inside connector body.
B. Slide crimp sleeve forward and crimp as close as possible to body using a .255" hex die. Use Times HX-4 crimp tool or equivalent. Maximum width of full crimp is .400". Do not crimp rear of crimp sleeve.
C. Heat-shrink weather seal over rear of connector body and down onto cable jacket using hot air gun.