



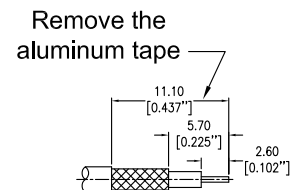
SC-100-SM-RA
3190-2246

SMA male (Plug) Right Angle Solder
Pin Connector for LMR-100A cable

YYWW

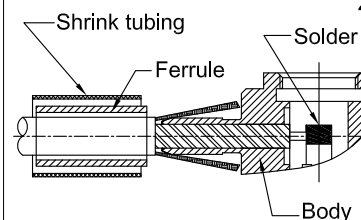
Made in China

Installation Instruction

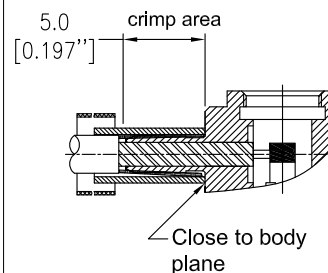


dimensions in millimeters

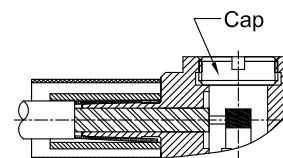
1. A. Trim cable to dimensions shown. Be careful to avoid nicking the braid
- B. Remove any residual plastic from center conductor
- C. Remove the aluminum tape



2. A. Slide the ferrule and shrink tubing over the cable as shown
- B. Insert cable into connector body until it stops, with all braid wires on the outside of connector body
- C. Solder conductor of cable to contact pin as shown



3. A. Slide crimp ferrule over braid and crimp as close to body as possible using .128" HEX crimp tooling. Pay attention to the crimp area, do not crimp rear of crimp sleeve



4. A. Install screw cap
- B. Heat shrink tube over rear of connector body and down on to cable jacket using hot air gun