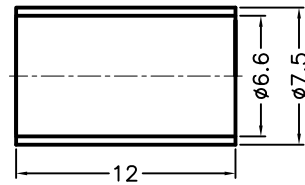
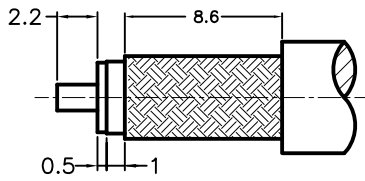
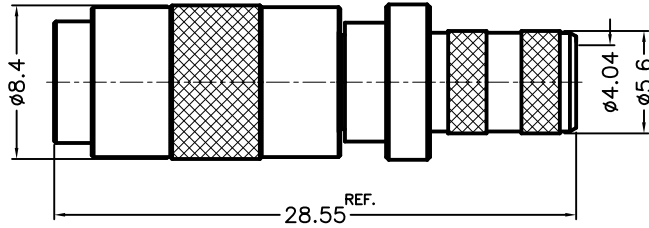


NOTICE OF PROPRIETARY RIGHTS: THIS DOCUMENT CONTAINS CONFIDENTIAL TECHNICAL DATA, INCLUDING TRADE SECRETS, PROPRIETARY TO TIMES MICROWAVE SYSTEMS. DISCLOSURE OF THIS DATA IS EXPRESSLY CONDITIONED UPON YOUR ASSENT THAT ITS USE IS LIMITED TO USE WITHIN YOUR COMPANY ONLY. ANY OTHER USE IS STRICTLY PROHIBITED WITHOUT THE PRIOR WRITTEN CONSENT OF TIMES MICROWAVE SYSTEMS.

SYM	REVISION DESCRIPTION	DFTM	DATE	APPD	DATE
A	RELEASED FOR PRODUCTION	K.A.M.	1/29/10	J.D.B.	3/5/10



RECOMMENDED
CABLE STRIPPING DIM'S

ALL PARTS SATISFIED ROHS REQUIREMENTS

MATERIALS AND PLATING		UNIT: MICRO-INCHES
BODY	BRASS C3604	ALBALOY 80µ" /COPPER
CONTACT PIN	BRASS C3604	GOLD 10 µ" /NICKEL/COPPER
INSULATOR	TEFLON MIL-P-19468	N/A
SHELL:	BRASS C3604	ALBALOY 80µ" /COPPER
FERRULE	COPPER	ALBALOY 80µ" /COPPER
BODY	C17300	GOLD 5 µ" /NICKEL/COPPER

ELECTRICAL CHARACTERISTICS	
Impedance	50 Ω
Voltage rating	500V(rms)
Frequency range	0~4GHz
Dielectric (withstanding voltage)	500V
Contact resistance	Center contact: ≤6mΩ
	Outer contact: ≤3mΩ
(Insulation resistance)	≥1000MΩ
Insertion loss	CABLE DEPENDENT)
RF- leakage	N/A
VSWR	<<1.2 (0-2.2GHZ)
3rd Intermodulation)	N/A

(MECHANICAL CHARACTERISTICS)	
Force to engage and disengage)	2.3 lbs MAX.
Center contact retention force	N/A
(Coupling torque)	N/A
(Shell retention force)	>> 60 LBS
(Durability)	≥ 500 cycles

ENVIRONMENTAL CHARACTERISTICS	
Temperature range	-55°C- +125°C

1. CRIMPED FERRULE
HEX. CRIMP SIZE .256"
2. SOLDER-ON CONTACT PIN

MATL:	UNLESS OTHERWISE SPECIFIED		DFTM: K. A. M.	TIMES MICROWAVE SYSTEMS			
	ALL DIMENSIONS ARE IN mm		DATE: 1/29/10				
USED ON: 0	TOLERANCES ON DECIMALS		CHKD: J. D. B.	1 / 2.3" TYPE ST JACK, 50 Ωhm FOR LMR240 CABLE			
	.X ± 0.2 .XX ± 0.1		DATE: 3/5/10				
	ANGLES ± 3 SURFACE FINISH: 1.6µ		APPD: J. D. B.				
SCALE: ~	DWG. SIZE: A	DO NOT SCALE DRAWING	CODE IDENT: 68999	DATE: 3/5/10	1 of 1	SD3190-2512	REV: A